

COMTÜR – THE DOOR MANUFACTURER

A historical journey through time with
a globally active family company

100
Jahre

WOHNKULTUR
1919 ————— 2019



INTERIOR DESIGN SINCE 1919

COMTÜR
EXCLUSIVE DOORS

THE ROOTS

THE START OF A SUCCESSFUL FAMILY HISTORY



The first machinery room with band saw, planing machine, belt sander and jointing machine



TOOLS OF THE TRADE

In the small workshop, incoming orders were built using simple tools in lengthy and physically strenuous processes.



Over the course of centuries, people have learned how to work with and refine the incredible material “wood” by creating many suitable tools and machines.



CRAFTSMANSHIP

A heavy, solid oak dining room buffet, stained and with glued-on carved details, manufactured by Martin Schütz around 1930. The required wood was sourced from the community forest, taken to the sawmill and then air-dried for 2–3 years.

„CRAFTED BY HAND“ – WORKING WITH THE SIMPLEST TOOLS

BIBERACH 1919

The company was founded in 1919 by Martin Schütz as a building and furniture joinery. In addition to traditional furniture production, carpentry was one of the focal points in the post-war period.



The Schütz & Weimann family in 1955



MASTERFUL

There have already been many times in the history of the company where the family deliberately made a stand against mass-produced furniture, instead opting for uniqueness and quality. The foundations for this were put in place by company founder Martin Schütz and his craftsmanship.

Martin Schütz's master craftsman's certificate from 1921

TRANSFORMING WOOD AS A NATURAL RESOURCE THROUGH CREATIVE DESIGN
INTO OBJECTS OF LASTING VALUE



Elegant living room buffet in French walnut, slightly stained dark brown and polished, by Hans Weimann around 1954.



LISA & HANS WEIMANN

At the young age of 13, Hans Weimann had already started a cabinet maker apprenticeship in Wertheim am Main. His vision was to make a lasting contribution to the changes taking place in interior design. After his wedding to Lisa Schütz, Hans Weimann entered his father-in-law's company in 1948.

FURNITURE CULTURE

Based on in-house designs, the company made everything from simple store cupboards to high-quality veneered living room and bedroom furniture that was hand-polished to a high-gloss finish. *“Even though the working environment was often tough and even harsh in some cases, I did always really enjoy this creative job,”* explained Hans Weimann in a speech on the development of the trade in 1999.

WEDDING SUIT

So that he could pay for the fabric for his wedding suit, Hans Weimann made ten high-value jewelry boxes, which he then sold to an art business in Frankfurt.



Jewelry box made of polished French walnut. The lid features a star inlay using maple and Wenge wood marquetry. The box and lid are milled and chamfered solid plum wood; the unit was made by Hans Weimann in 1948.

THE ENTIRE FAMILY WAS PART OF THE COMPANY RIGHT FROM THE BEGINNING

STARTING A FAMILY

“My darling Lisa and I always worked together so well as a team. She looked after the books and took care of the household, while I had my job. There was now also time to start a family, and we were delighted to be blessed with three healthy children. First there was Gerhard, who became a carpenter and then a technician, followed by Wolfgang, who first became a businessman and then a designer, and then we had Margit, our youngest child.” Hans Weimann, at a speech for his 85th birthday



Gerhard Weimann playing with a truck and trailer built by his grandfather; the picture was taken around 1953



COMMEMORATIVE PLAQUES

In 1951, on behalf of the protestant parish of Biberach two commemorative plaques made of oak were crafted in a Gothic style with an engraved banderole. The plaques can still be admired in the church today.

THE ERA OF CURVED ARCHES

HANS WEIMANN DISCOVERS A MARKET NICHE IN 1960 – CURVED-ARCH DOORWAY LINERS IN A SINGLE PIECE



High-quality basket arch door finished with fine strip edges, around 1963



DONE!

After three years in development, the company had finally managed it – the curved-arch press developed in-house was taken into operation. Curved arches for individual doors in furniture quality. This marked the start of a boom period for the company and was the point from which they started to focus on the development and manufacture of period-style and curved-arch doors.



Lisa and Hans Weimann have plenty to celebrate with Josef Scharli, the first journeyman to be hired, and their son Gerhard.

A TINKERER AND INVENTOR

In the production of curved-arch doorway liners from a single piece of wood, Hans Weimann discovered a market niche and gave free rein to his “Swabian ingenuity.” Tenacious and determined, he searched for solutions and methods to produce curved doorway liners more cost effectively. It took many attempts and trials with different materials, equipment and clamping tools until the right solutions became apparent.



AN ARCHITECT OF DOOR CULTURE



The cover of a brochure from 1988 entitled “Crafted for a good way of life”



THE CHANGE

In 1977 the sons Gerhard and Wolfgang took over the running of the company “Weimann Tür & Form.” Its core business: to expand and keep developing door manufacturing. Gerhard proved himself as a technician and contributed valuable ideas that improved production processes and product quality. Wolfgang emerged not only as a driving force during the expansion of the company, but also grew into a creative door designer.



ATTENTION TO DETAIL

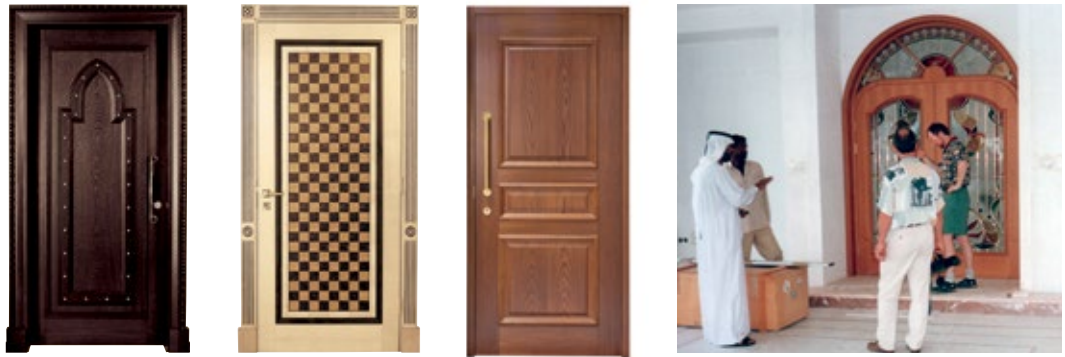
„So that we could meet the wishes of our customers in the best possible way, we set up our production facilities to be flexible, and we are very proud of our skilled staff, many of which have been with us for a very long time and were even trained by us as well.” Wolfgang Weimann



Flyer "Türen für's Leben" ("Doors for life") from 2002

EXPORT HISTORY

In 1990, the first major foreign order was landed in the form of an order from a sheik in Riyadh, which laid the foundations for the successful export history of the company. Sticking to the company's motto of "There's no such thing as 'impossible'," doors are made to measure for a wide range of different markets.



COMTÜR

Under the name ComTür – a portmanteau of the German words "Complett-Türen & Zubehör" (Complete doors & accessories), the company developed a new, modern line of doors in 1988. It stands for innovative and high-quality doors, which are systematically produced and marketed in conjunction with selected accessories.



Hans Weimann wants the company to continue under the guiding principle that there is "no such thing as impossible."

NEW LOCATION

In 1997 a second production site was constructed in the Böllinger Höfe industrial area in Heilbronn with administration offices and a large gallery of doors. Further buildings have since been added to what is now the headquarters of the family company in the heart of Southern Germany.



ComTür headquarters in Heilbronn, around 1997



RUBBED LACQUER FINISHES

Development of the ComTür rubbed lacquer finishes, which are still completely unique, for a satin velvet finish in furniture quality. The multi-layer lacquer finish uses a coating of around 200–250 g/m² for lacquers in white and other colors and is easy to care for and durable.



THE 4TH GENERATION

GREAT-GRANDCHILDREN ASSUME CONTROL NEARLY 100 YEARS AFTER THE COMPANY WAS ORIGINALLY FOUNDED



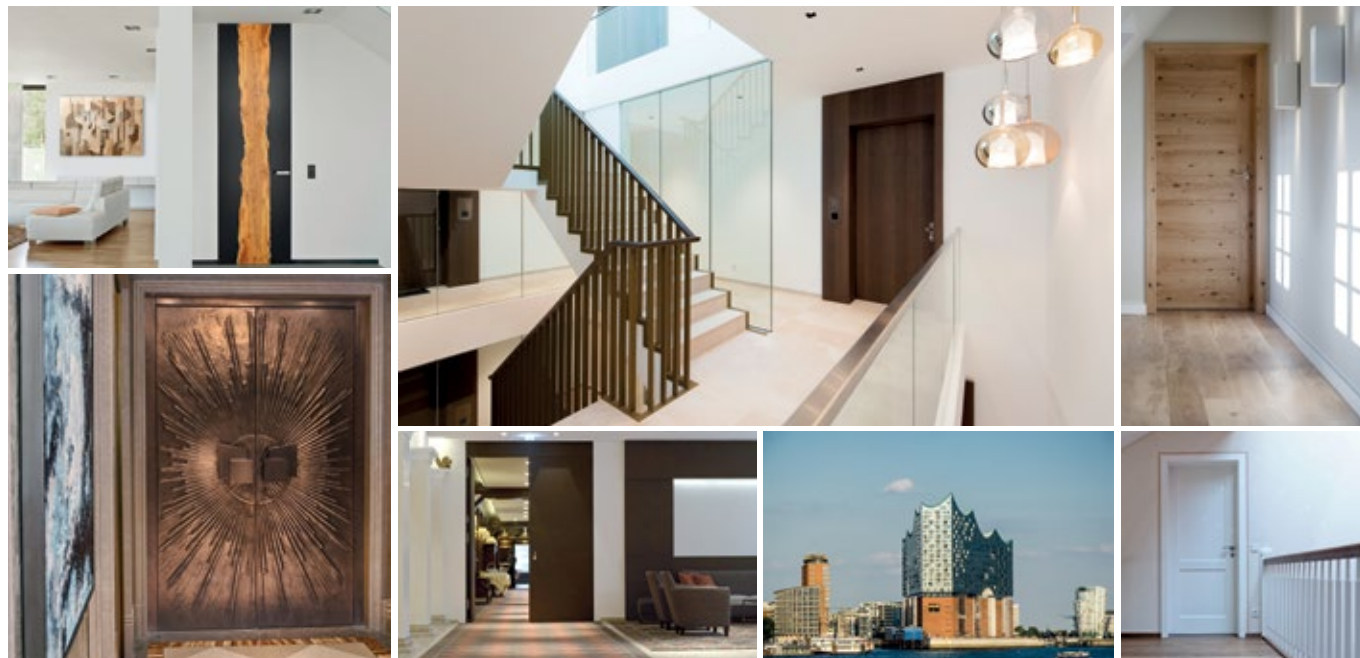
The great-grandchildren: Mario Weimann, Martin Weimann, Anne Hübner

THE GREAT-GRANDCHILDREN

In 2009 Martin Weimann joined the company as Technical Director. In doing so, he laid the foundations for the development of new product lines and functional doors. A year later he was followed by his cousin, Anne Hübner, who joined in a role focusing on Marketing, Controlling and Corporate Governance. The trio was completed in 2018 when Mario Weimann joined as Sales Director. Together they are hoping to steer the company into the future in line with the original aspirations of their great-grandfather.

REFERENCES

The right door solution for every requirement. As a project partner, ComTür offers an extensive range of door concepts – everything from fire and smoke safety doors to sound insulation, different climate classes and burglary protection, as well as doors for wet rooms.



DOORS AS HIGH-QUALITY FURNITURE OBJECTS

SIMPLY PROUD

We are proud of our history as a family company and the generations that have made such a large contribution to the development of the company. We are proud of the values and guiding principles that applied then and now – and we are particularly proud of our employees, many of whom have stayed with us for a very long time and who make it possible for us to help our customers shape their living spaces with the aid of our doors.



The ComTür team

100 Jahre
WOHNKULTUR
1919 ——— 2019

INTERIOR DESIGN

According to the motto “There is no such thing as ‘impossible’,” we plan to continue setting new standards with creative ideas and will continue to offer our customers technically sophisticated doors with the familiar quality, diversity and design freedom.

PRODUCT OVERVIEW

DESIGN FREEDOM

INTERIOR DESIGN SINCE 1919

For us, doors are wall-shaping elements – whether in traditional period styles, as puristic designer doors, made-to-measure special designs to match other interior decor and furnishings or as front doors that are integrated in the facade.

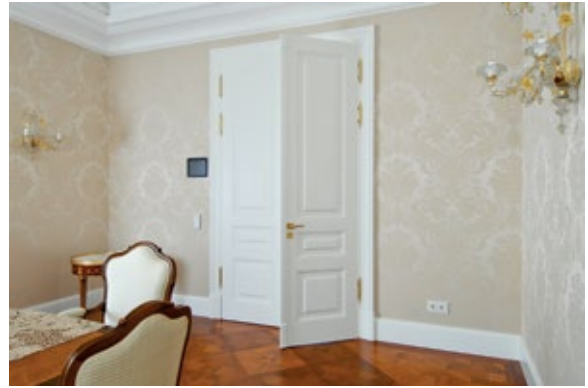
ComTür offers an extensive range of door concepts for you to exploit your design freedom.

CONTEMPORARY & TIMELESS



Sophisticated designs, reduced to the essentials

TRADITIONAL & CLASSIC



Our classic designs – stylish doors with innovative technology

PROPERTY PROTECTION & FIRE SAFETY



The right door solution for every requirement

FRONT DOORS & APARTMENT ENTRANCES



Guaranteed safety, heat insulation and design variety